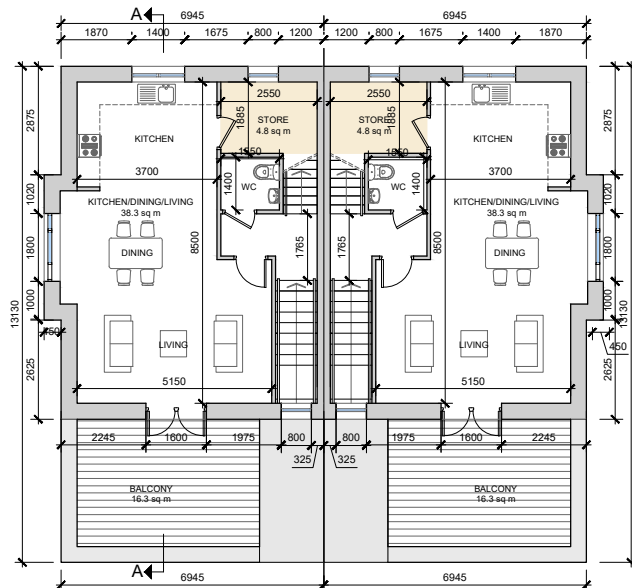


UNIT TYPE F4
 3-bed Duplex Apartment (5 person)
AREA: 105.7 SQ.M.
1138 SQ.FT.
 (with access staircase and ground floor entrance = 113.4 SQ.M.)
 STORAGE total - 9.4 sq.m.

UNIT TYPE F4(m)
 3-bed Duplex Apartment (5 person)
AREA: 105.7 SQ.M.
1138 SQ.FT.
 (with access staircase and ground floor entrance = 113.4 SQ.M.)
 STORAGE total - 9.4 sq.m.

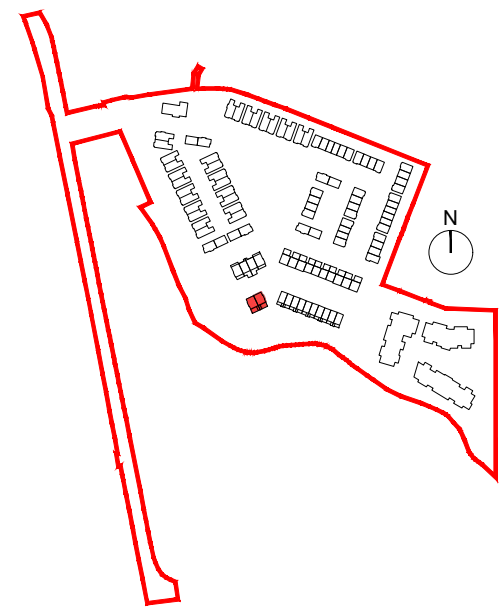


Apartment / Duplex Block 2 - Character Area 2

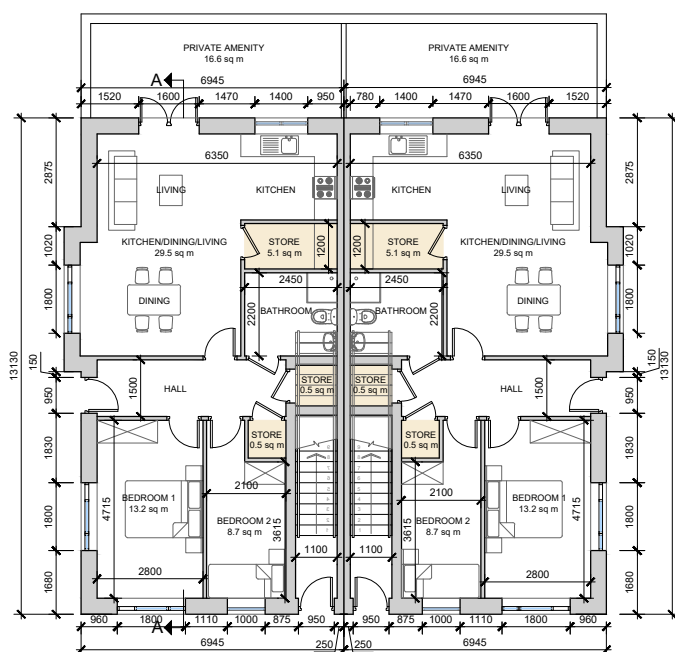


UNIT TYPE F3
 2-bed Ground Floor (3 person)
AREA: 72.5 SQ.M.
780 SQ.FT.
 STORAGE total - 6.1 sq.m.

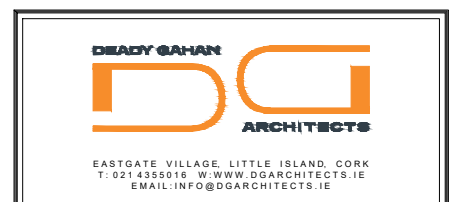
UNIT TYPE F3(m)
 2-bed Ground Floor (3 person)
AREA: 72.5 SQ.M.
780 SQ.FT.
 STORAGE total - 6.1 sq.m.



SEE SITE PLAN FOR ORIENTATION & FFL
 DWG NO. 23049/P/003



date	rev	name	chk	note
27.03.24	P1	MP	EJG	ISSUE FOR PLANNING



Project
 PROPOSED RESIDENTIAL DEVELOPMENT
 AT PORT ROAD, KILLARNEY, CO. KERRY

Drawing title
 APARTMENT / DUPLX BLOCK 2
 FLOOR PLANS

Scale	Drawn	Checked	Date
1:200 @ A3	PC	EJG	18.08.21
Project No.	Dwg. No.	Revision	
23049	23049/P/005	P1	

Information / Comments
 Planning
 Tender
 Construction